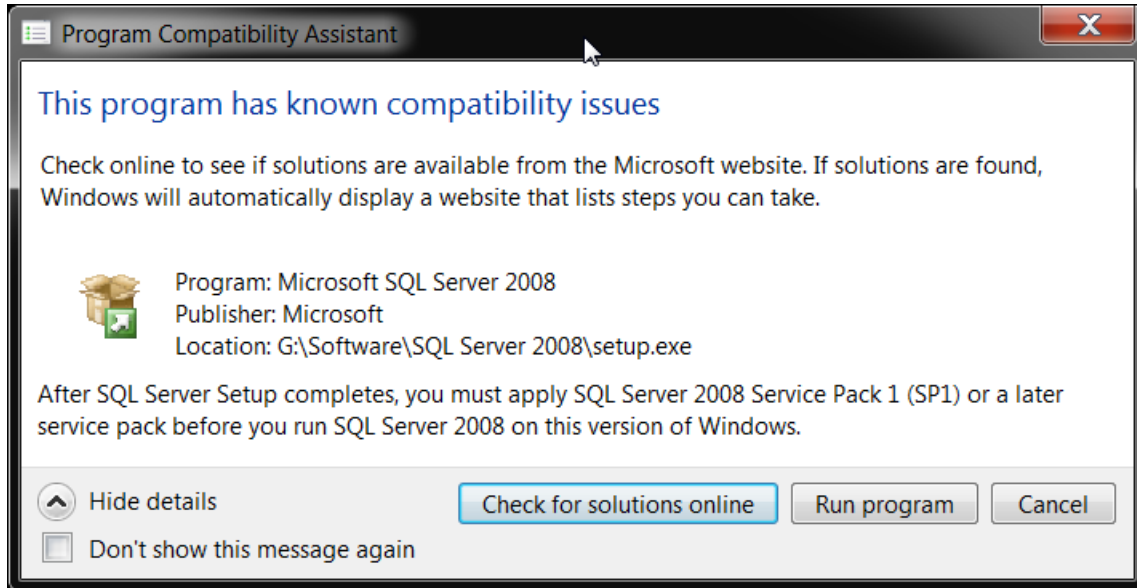
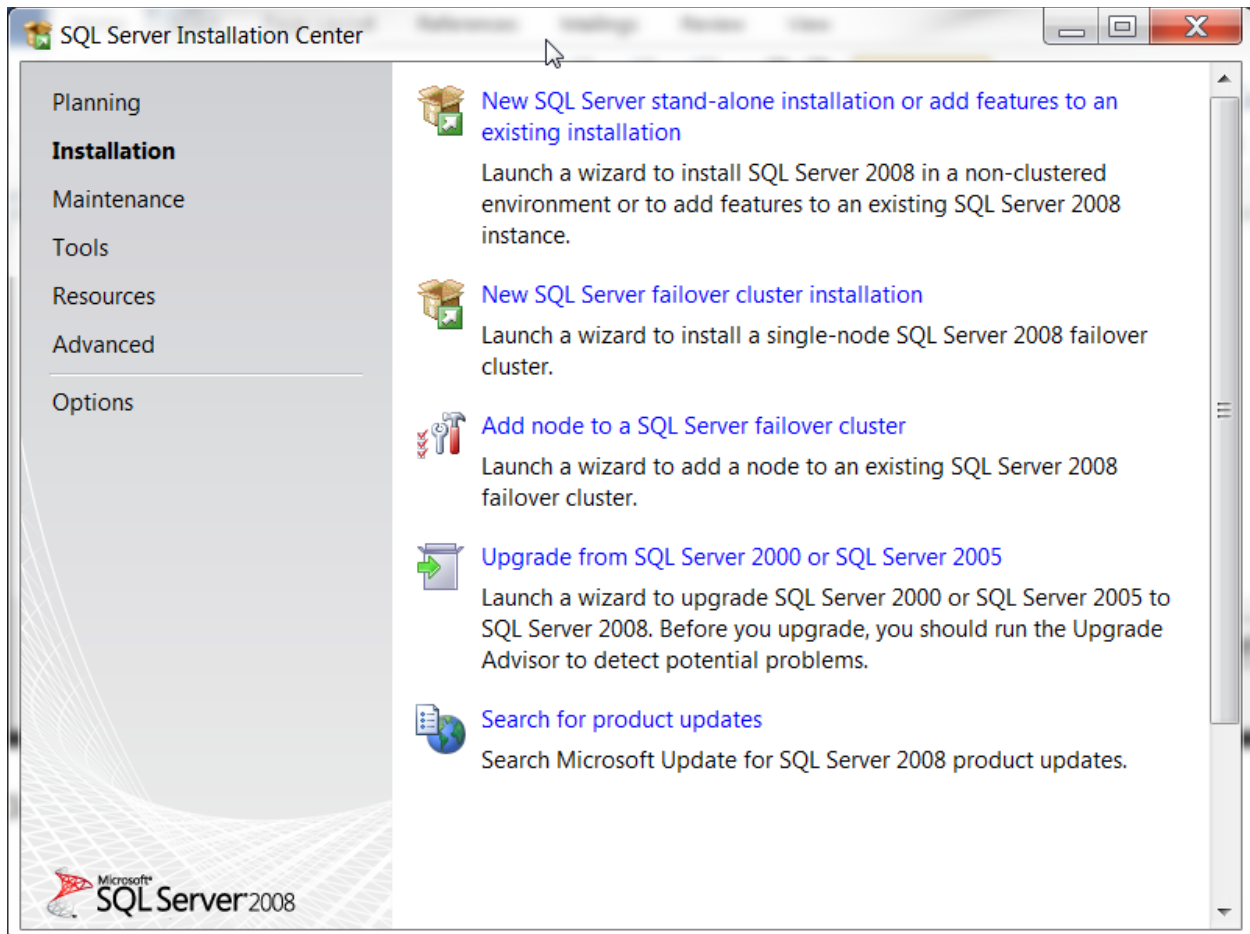


SETUP SQL SERVER 2008

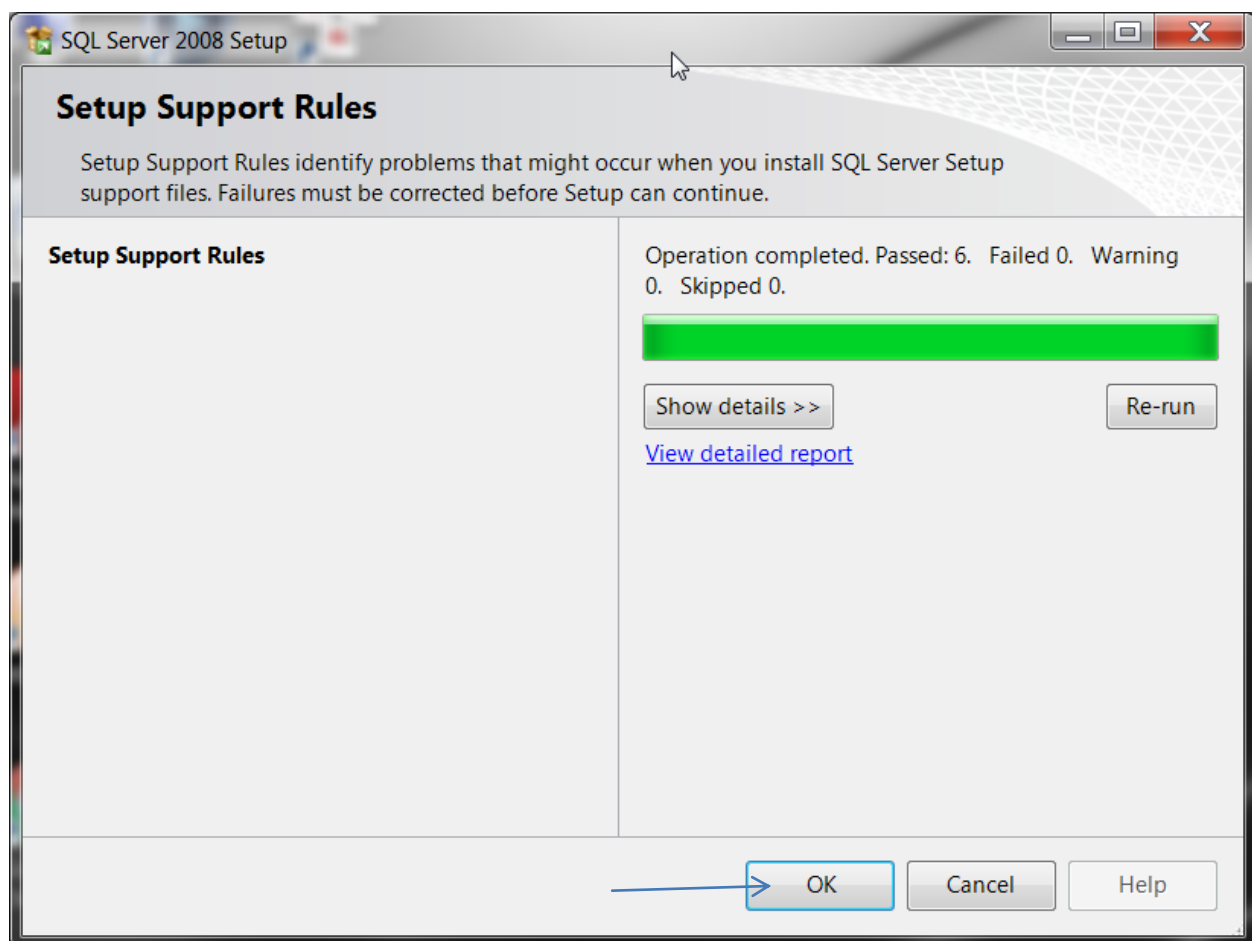
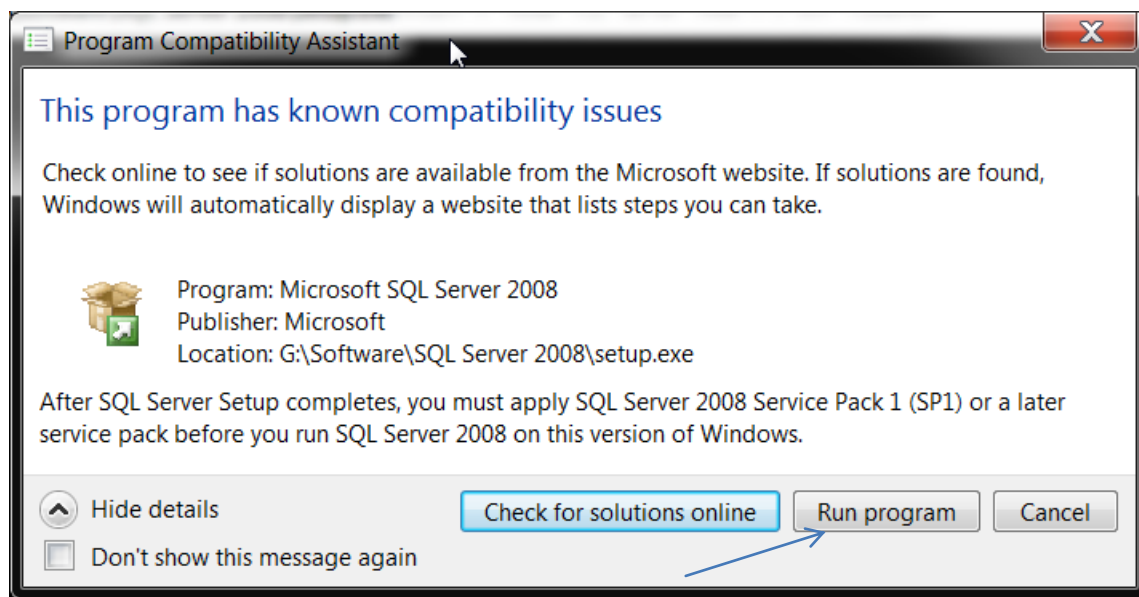
Right click file setup / Run as Administrator

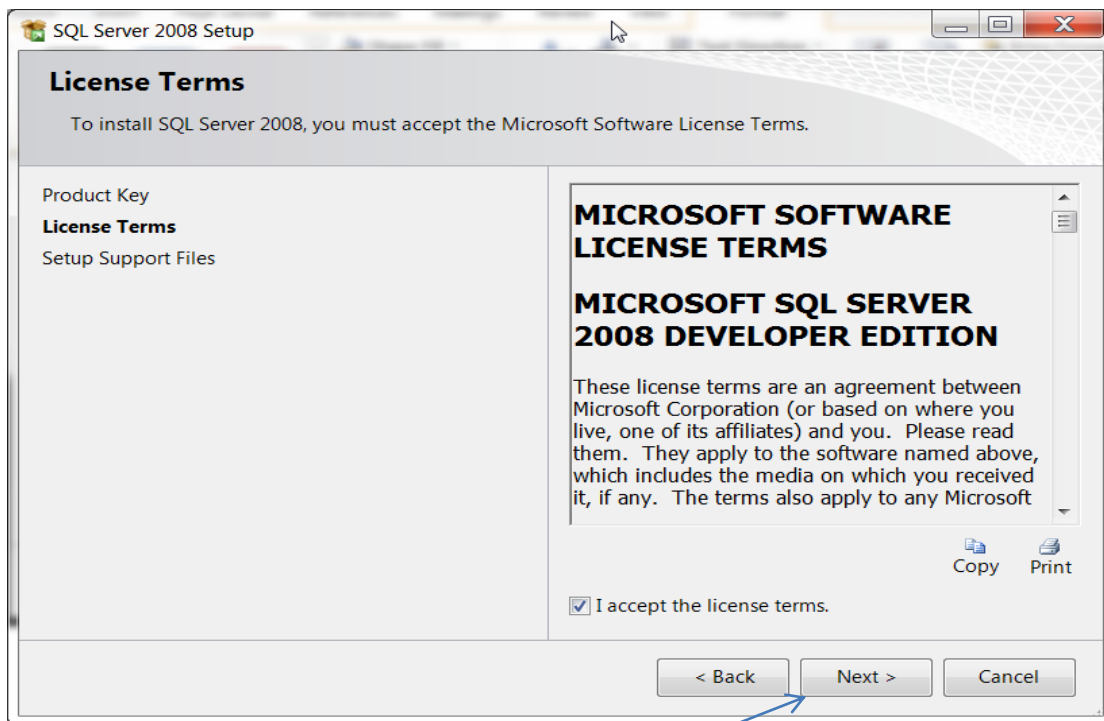
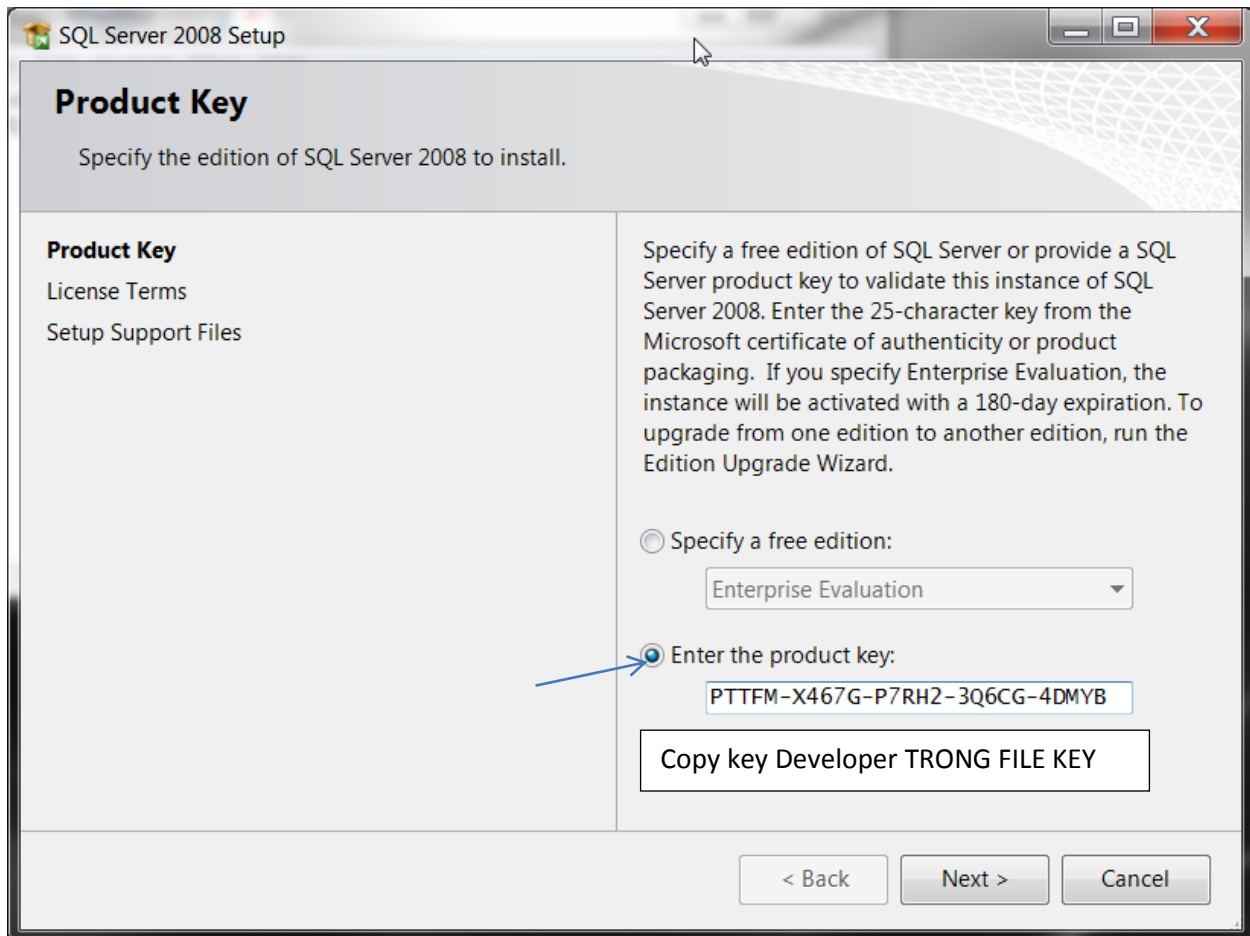


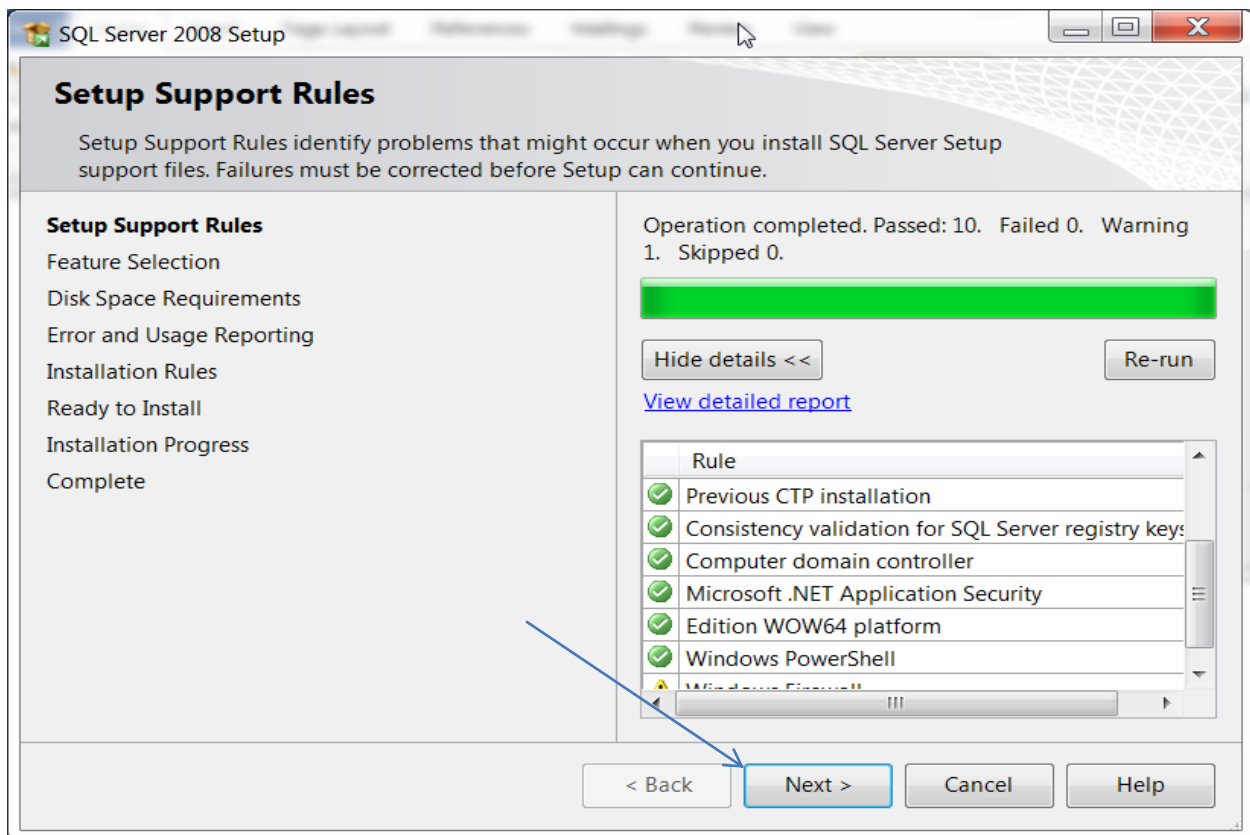
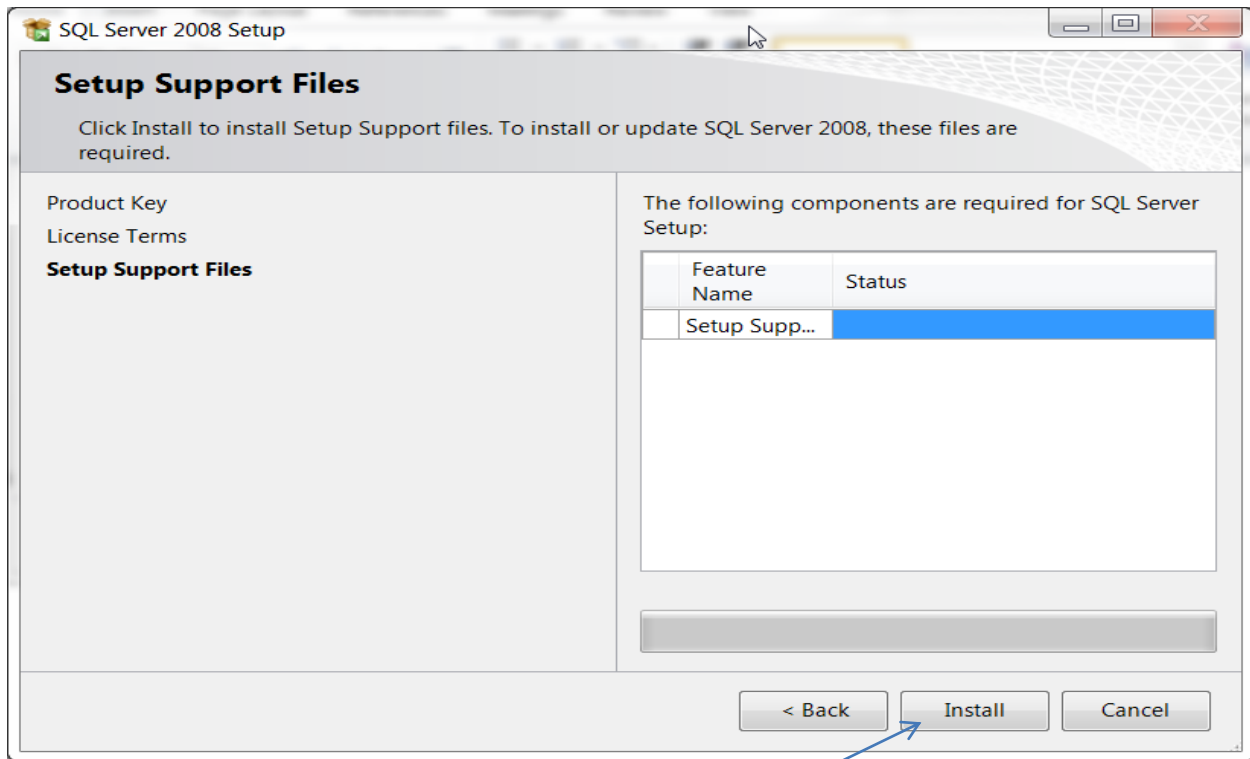
Click nút lệnh **Run program**

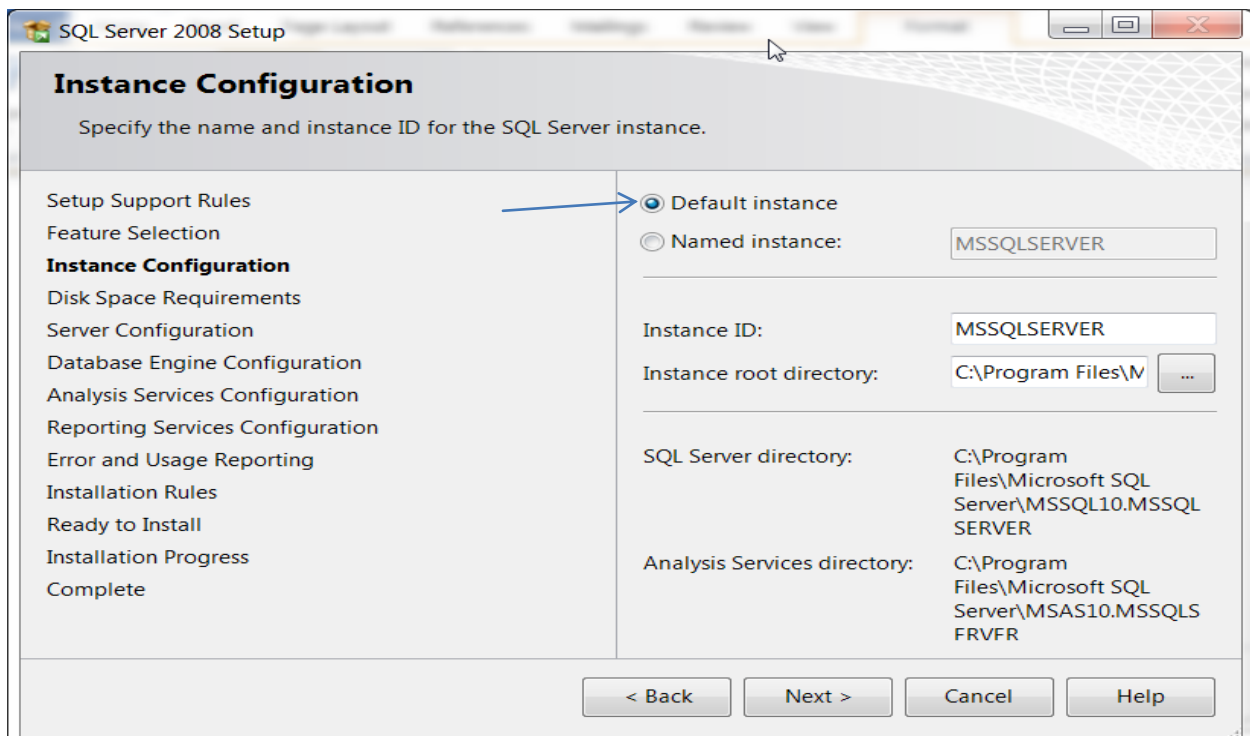
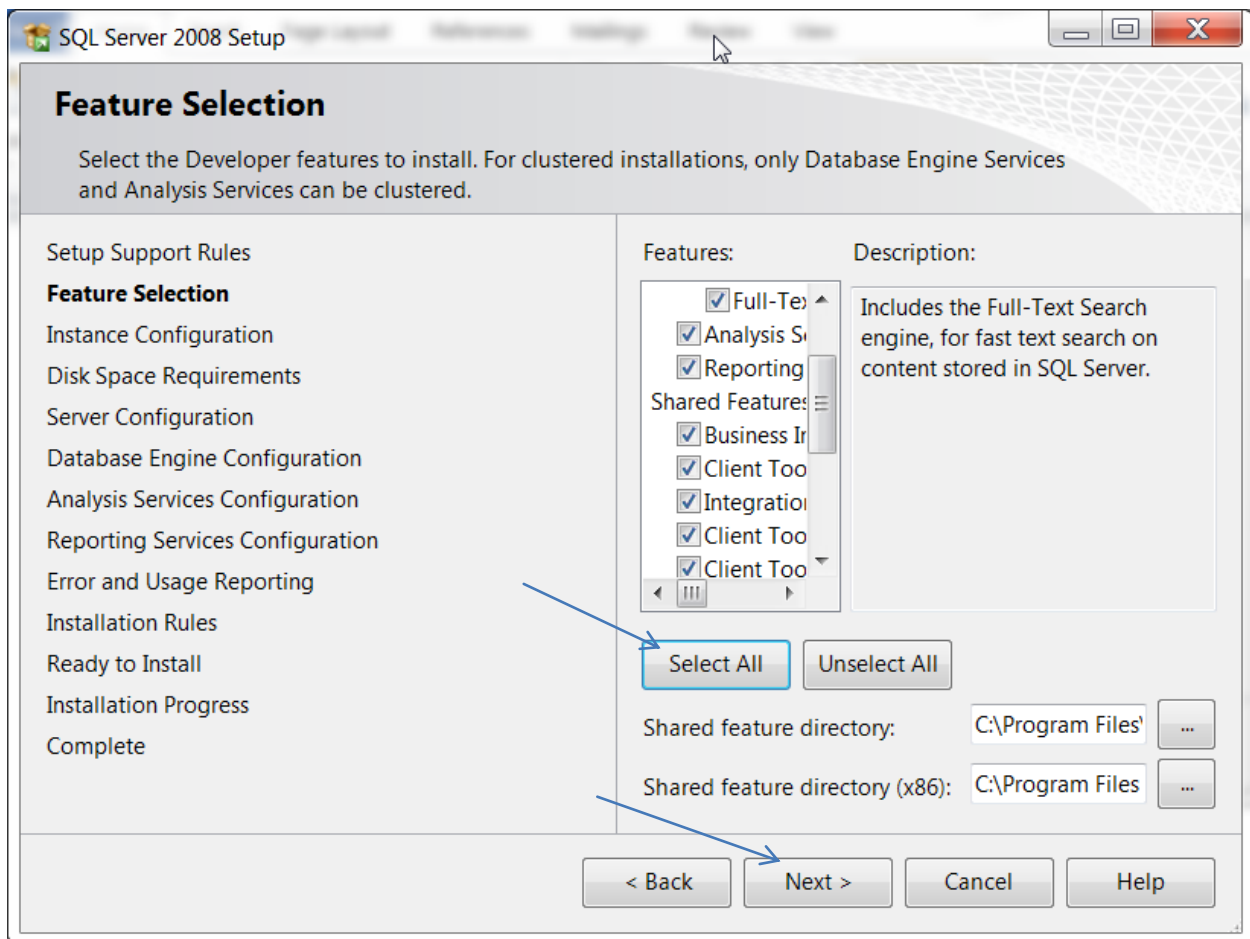


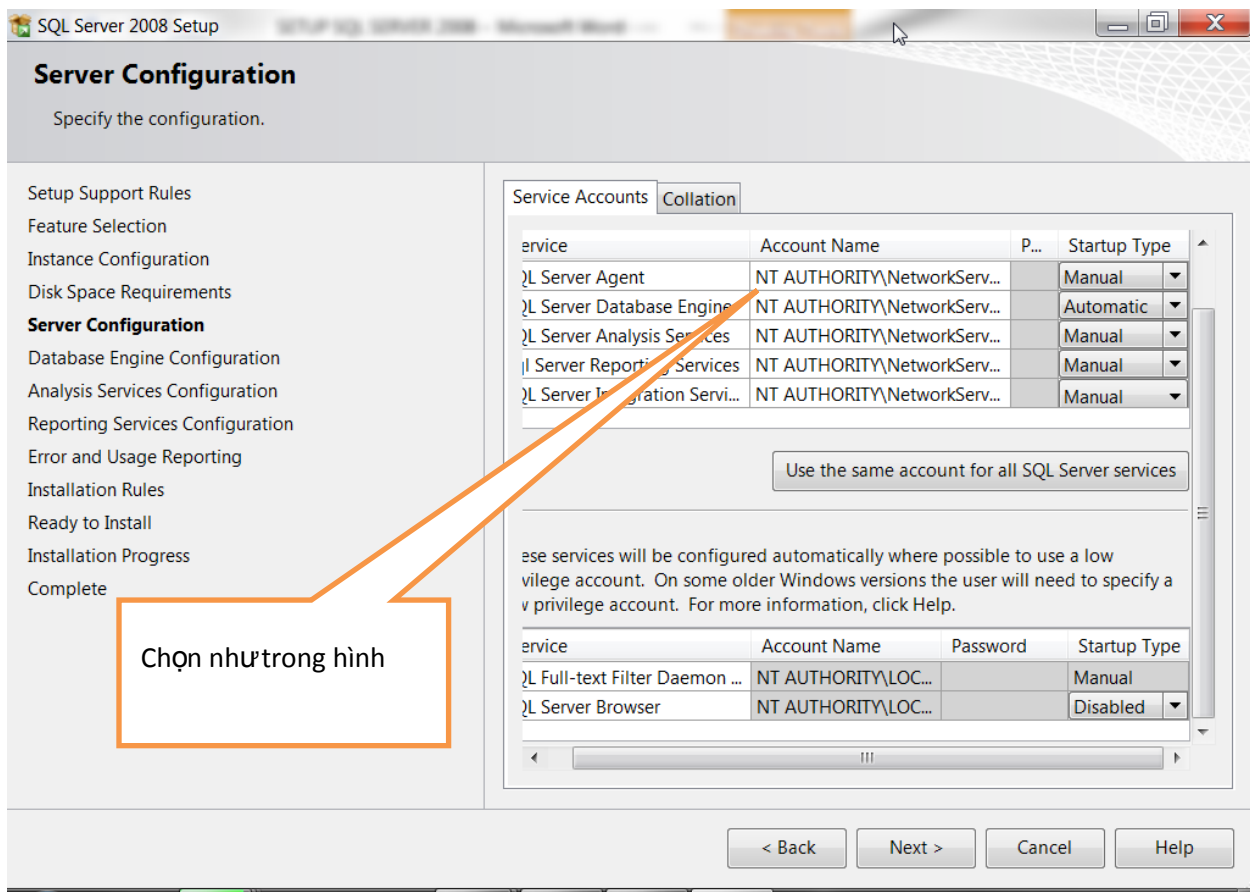
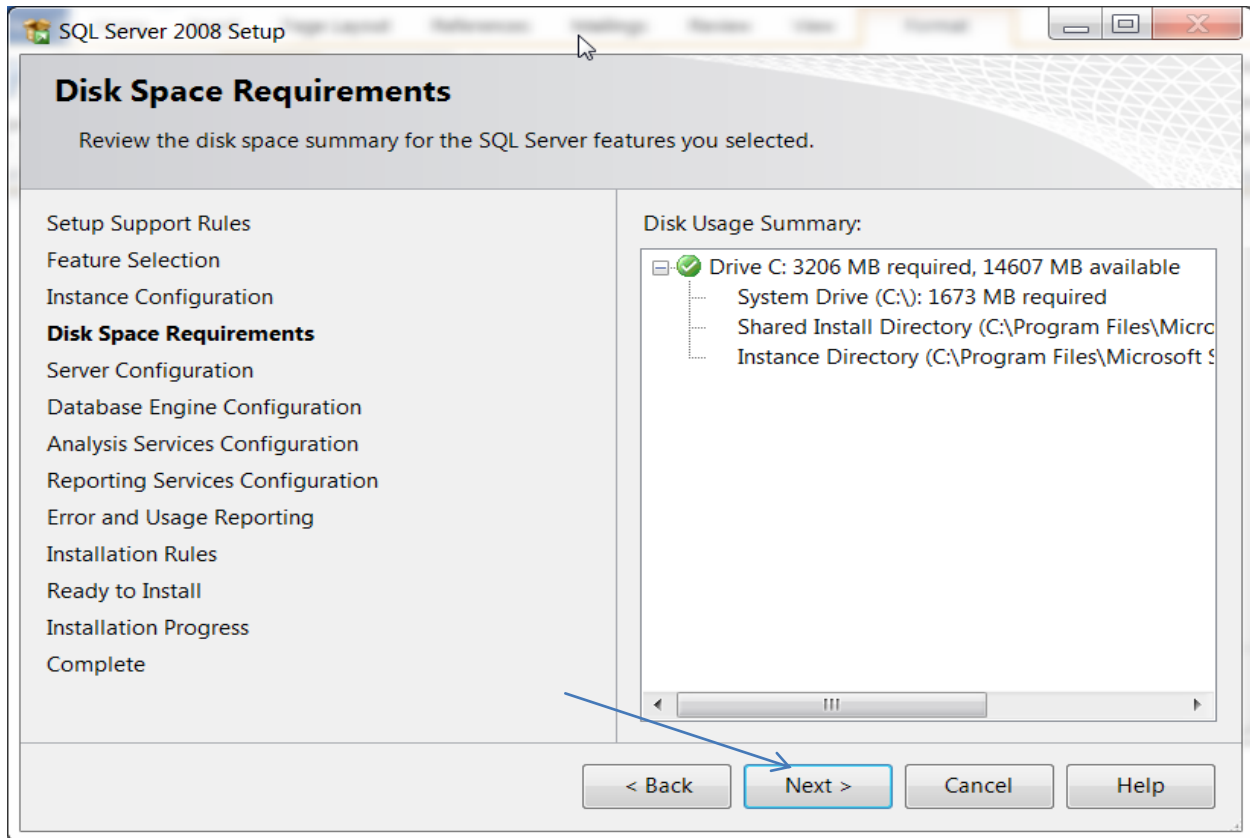
Chọn Installation / New SQL Server stand-alone installation or add features to an existing intallation

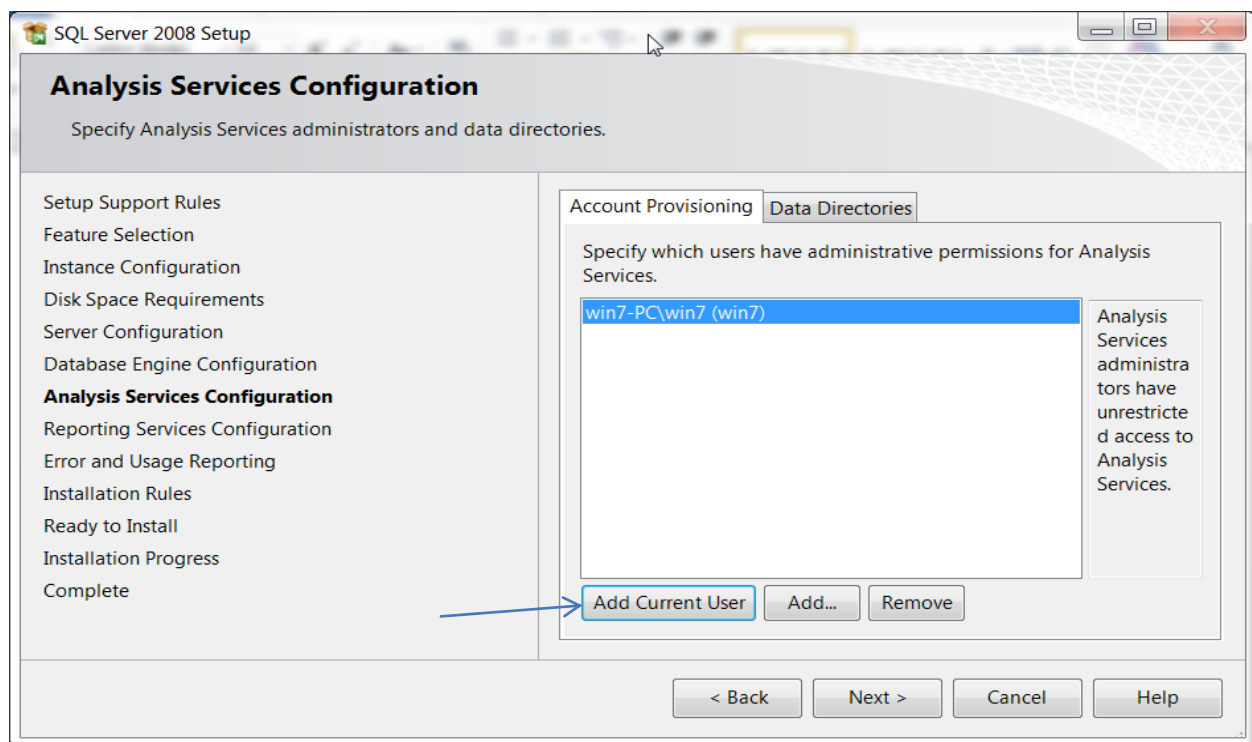
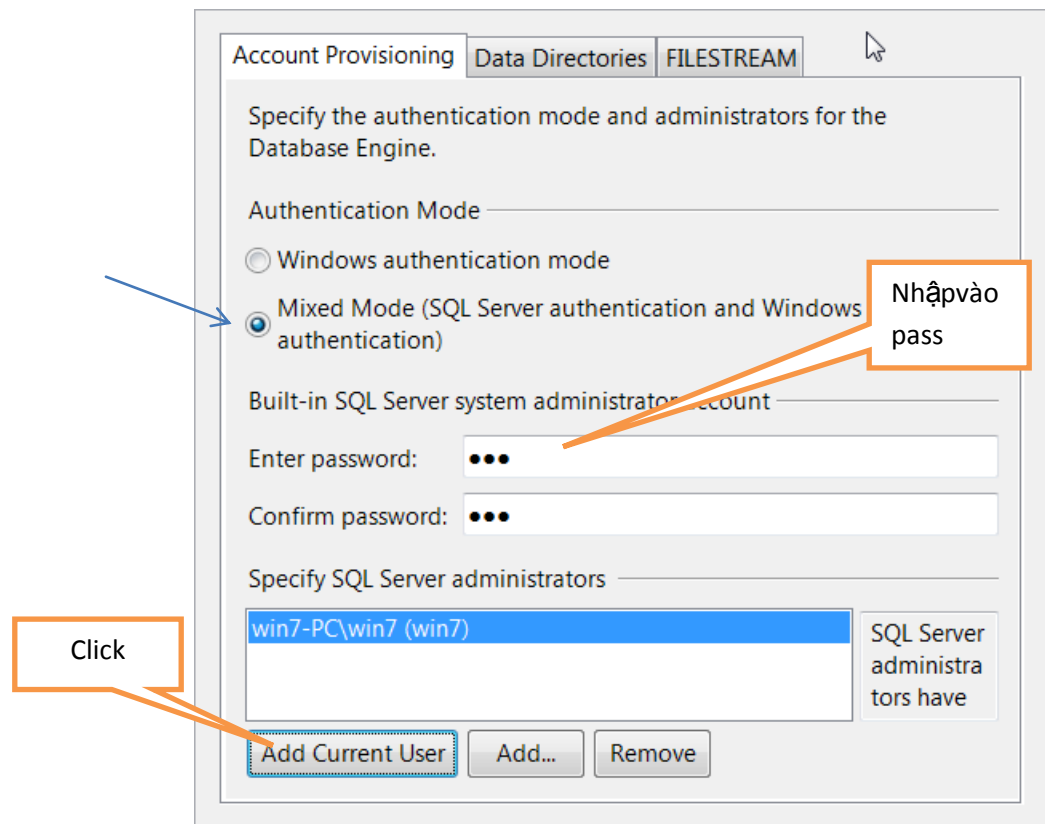












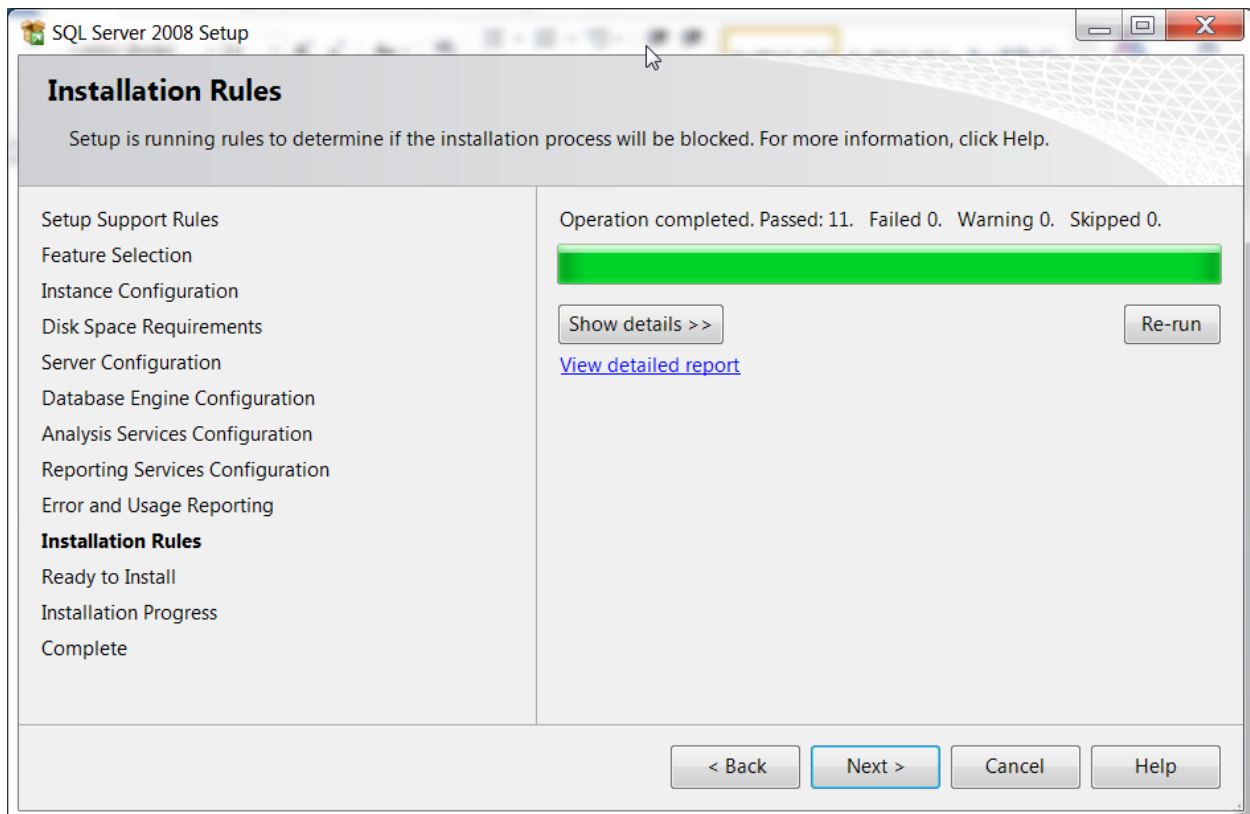
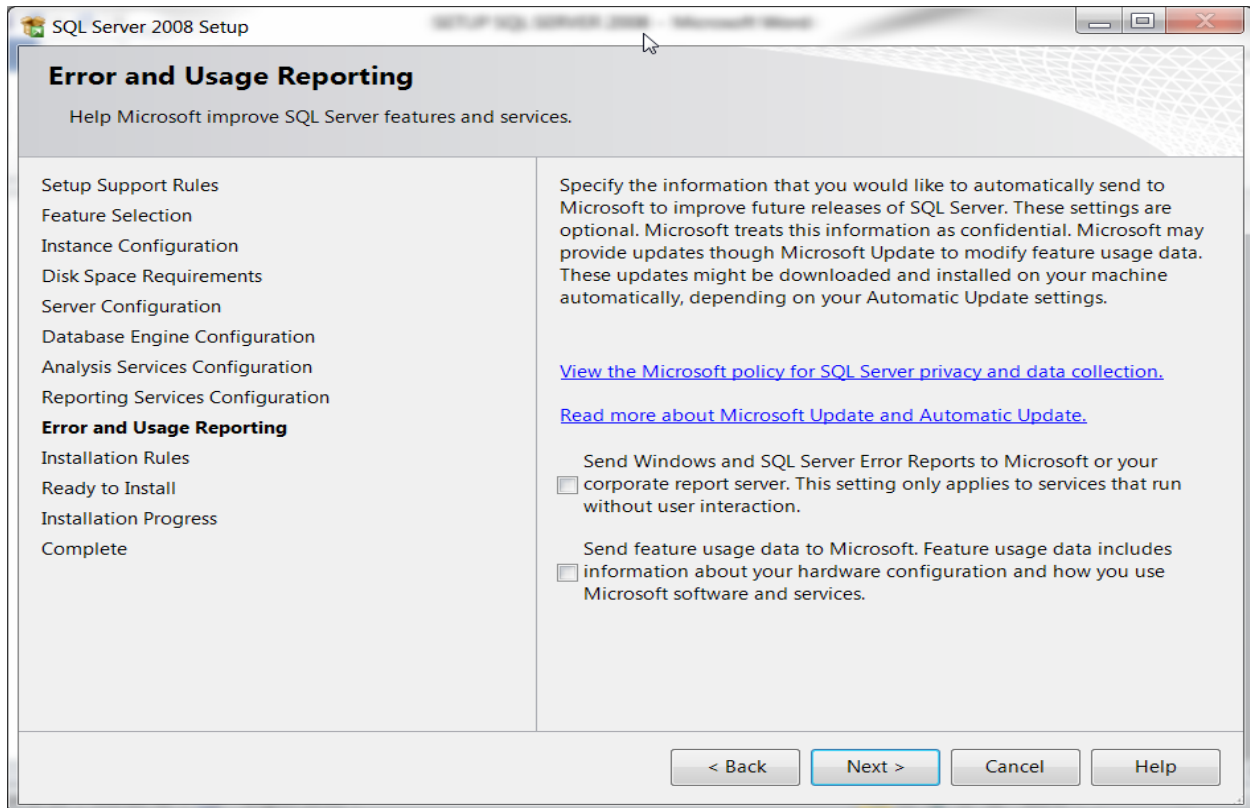
SQL Server 2008 Setup

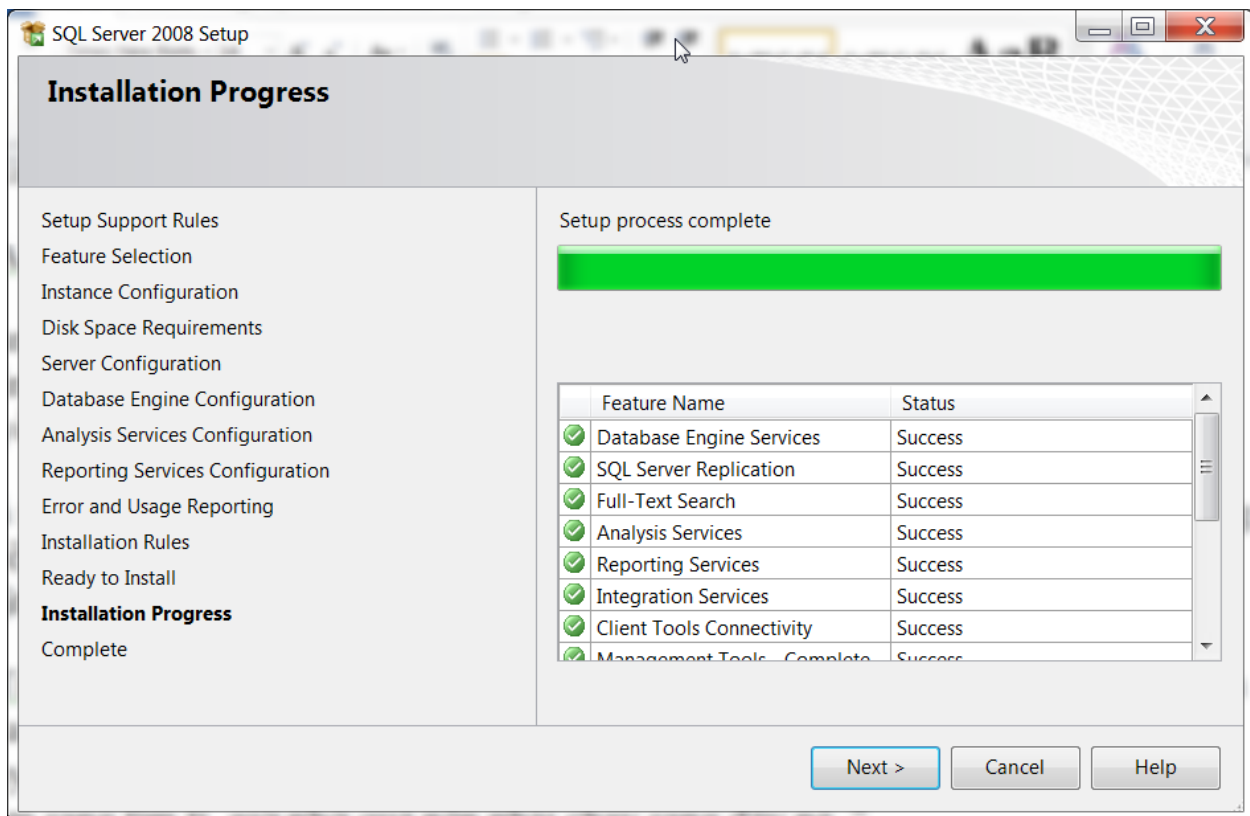
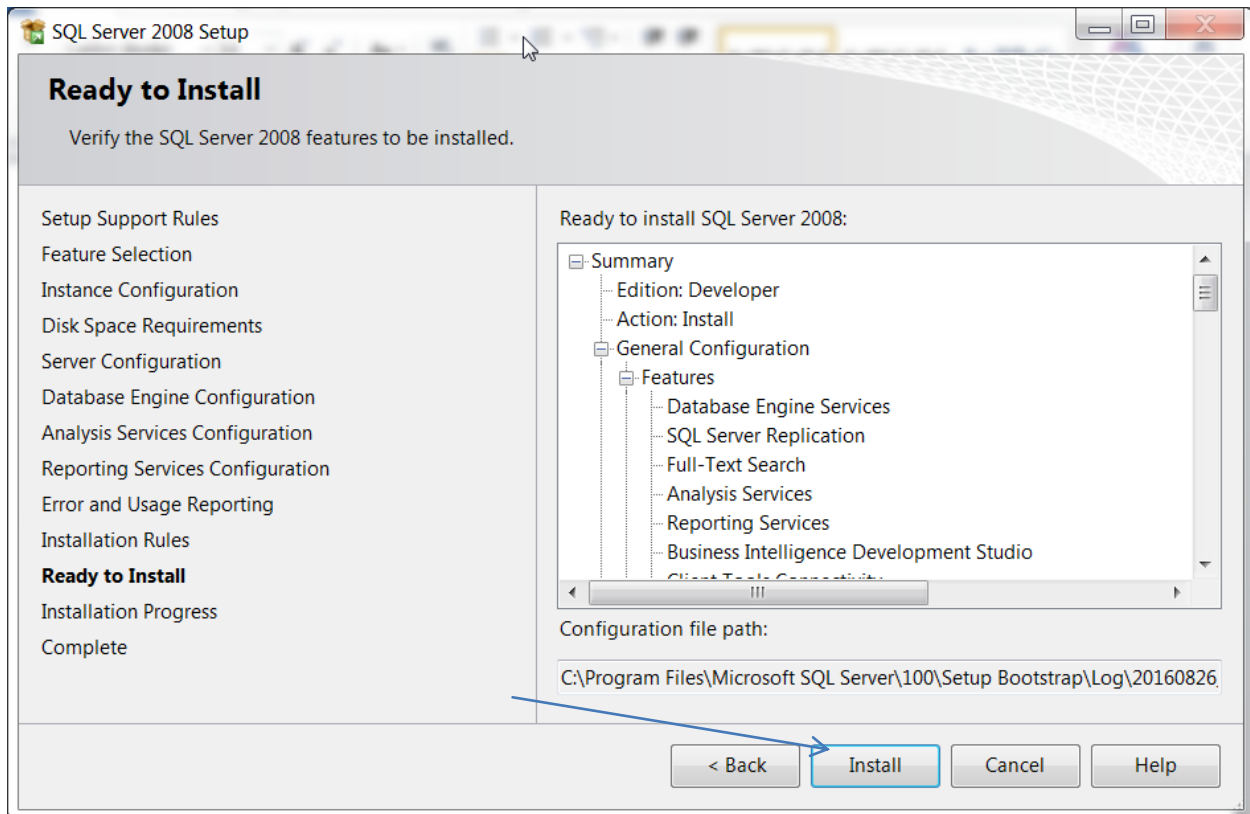
Reporting Services Configuration

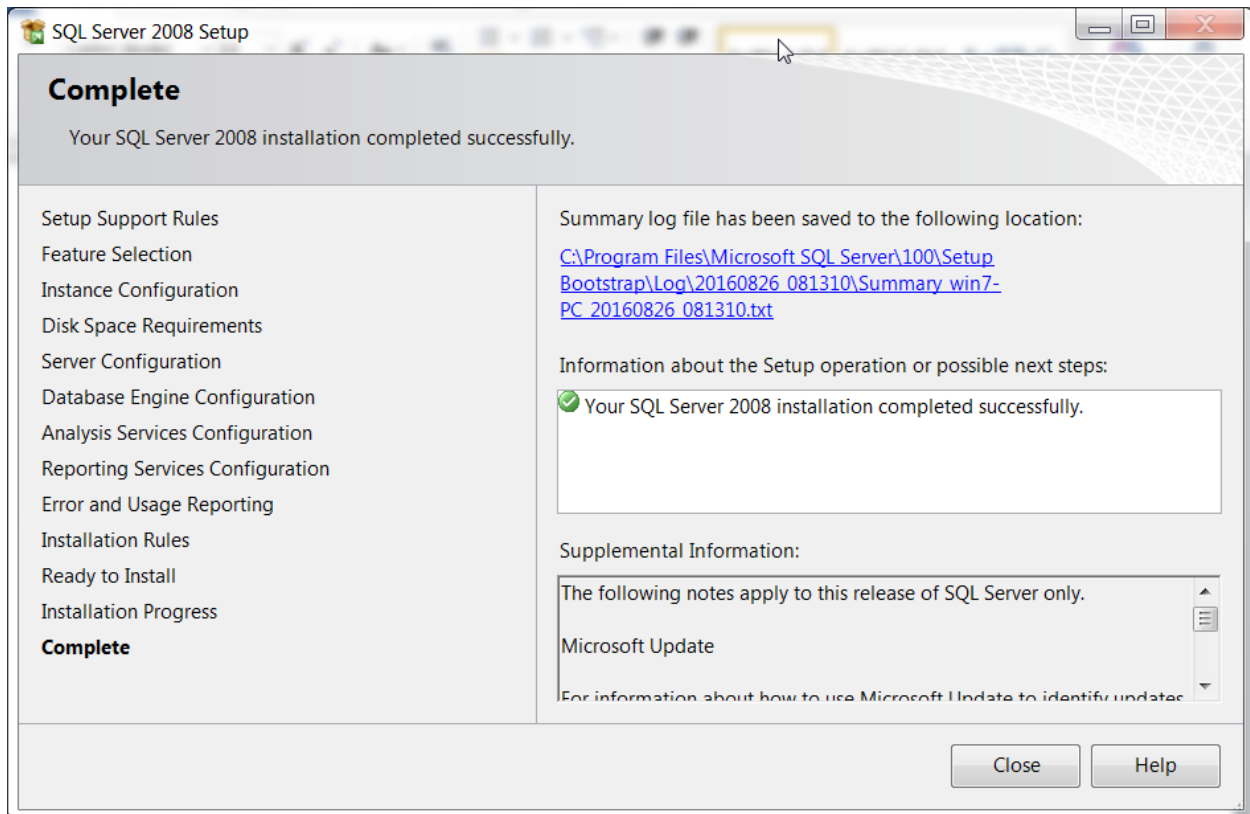
Specify the Reporting Services configuration mode.

Setup Support Rules	<input checked="" type="radio"/> Install the native mode default configuration.
Feature Selection	Setup will install the report server and configure it in Native mode to use the default values. The report server is usable as soon as Setup is finished.
Instance Configuration	<input type="radio"/> Install the SharePoint integrated mode default configuration.
Disk Space Requirements	Setup will create the report server database in SharePoint integrated mode and configure the report server to use the default values. However, integrated operations will not be supported until a minimal installation of a SharePoint product or technology is deployed on the report server computer and the Reporting Services Add-in for SharePoint Technologies is installed and configured on the instance of the SharePoint product or technology you are using.
Server Configuration	<input type="radio"/> Install, but do not configure the report server.
Database Engine Configuration	Setup will install, but will not configure, the report server software. After installation is finished, you can use the Reporting Services Configuration tool to set options that are required to run the report server.
Analysis Services Configuration	
Reporting Services Configuration	
Error and Usage Reporting	
Installation Rules	
Ready to Install	
Installation Progress	
Complete	

< Back Next > Cancel Help







Click Close, quá trình cài Server SQL hoàn tất.